

CORRECTION

Open Access



Correction to: Local preferences for three indigenous oil-seed plants and attitudes towards their conservation in the Kéné Dougou province of Burkina Faso, West-Africa

Fanta Reine Sheirita Tiétiambou^{1,2*}, Kolawolé Valère Salako^{3,4}, Jésuskégo Roméo Tohoun³ and Amadé Ouédraogo²

Correction to: J Ethnobiology Ethnomedicine 16, 43 (2020)
<https://doi.org/10.1186/s13002-020-00393-1>

Following publication of the original article [1], the authors reported errors in Figs. 2, 4 and 6.

The errors were the following:

In the legend on 'Phytogeographical zones', it said 'Southern Sudanian' and 'Norther Sudanian' in place of 'South-Sudanian' and 'North-Sudanian'.

In panels j, k and l, it said 'Peulh' on the x-axis in place of 'Fulani'.

In panel h, it said 'Peulh' on the x-axis in place of 'Fulani'.

The original article [1] has been updated to correct these errors and the (corrected) figures are included in this correction for reference.

The authors apologize for any inconvenience caused.

Author details

¹Centre Universitaire de Gaoua, Université Nazi BONI, 01 BP 1091, Bobo-Dioulasso 01, Burkina Faso. ²Laboratoire de Biologie et Ecologie Végétales, Université Joseph KI-ZERBO, 03 BP 7021, Ouagadougou 03, Burkina Faso. ³Laboratoire de Biomathématiques et d'Estimations Forestières, Faculté des Sciences Agronomiques, Université d'Abomey-Calavi, 04 BP, 1525, Cotonou, Bénin. ⁴Evolution Biologique et Ecologie, Faculté des Sciences, Université Libre de Bruxelles, CP160/12, Av. F. D. Roosevelt 50, BE-1050 Bruxelles, Belgique.

Published online: 26 August 2020

Reference

1. Tiétiambou FRS, Salako KV, Tohoun JR, et al. Local preferences for three indigenous oil-seed plants and attitudes towards their conservation in the Kéné Dougou province of Burkina Faso, West-Africa. *J Ethnobiol Ethnomed.* 2020;16:43 <https://doi.org/10.1186/s13002-020-00393-1>.

The original article can be found online at <https://doi.org/10.1186/s13002-020-00393-1>.

* Correspondence: tietiambou.fanta@gmail.com

¹Centre Universitaire de Gaoua, Université Nazi BONI, 01 BP 1091, Bobo-Dioulasso 01, Burkina Faso

²Laboratoire de Biologie et Ecologie Végétales, Université Joseph KI-ZERBO, 03 BP 7021, Ouagadougou 03, Burkina Faso

Full list of author information is available at the end of the article



© The Author(s). 2020 **Open Access** This article is licensed under a Creative Commons Attribution 4.0 International License, which permits use, sharing, adaptation, distribution and reproduction in any medium or format, as long as you give appropriate credit to the original author(s) and the source, provide a link to the Creative Commons licence, and indicate if changes were made. The images or other third party material in this article are included in the article's Creative Commons licence, unless indicated otherwise in a credit line to the material. If material is not included in the article's Creative Commons licence and your intended use is not permitted by statutory regulation or exceeds the permitted use, you will need to obtain permission directly from the copyright holder. To view a copy of this licence, visit <http://creativecommons.org/licenses/by/4.0/>. The Creative Commons Public Domain Dedication waiver (<http://creativecommons.org/publicdomain/zero/1.0/>) applies to the data made available in this article, unless otherwise stated in a credit line to the data.

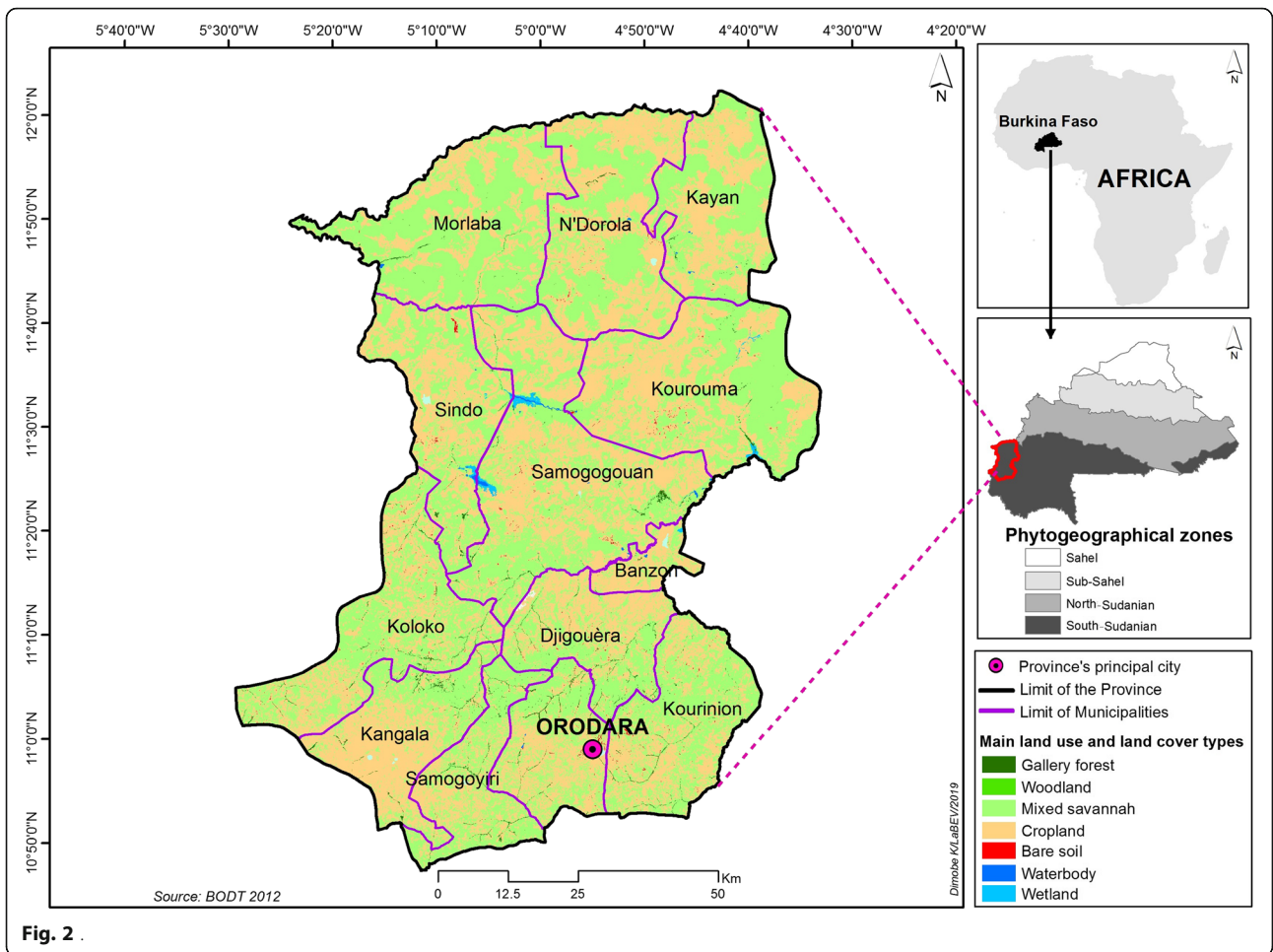


Fig. 2 .

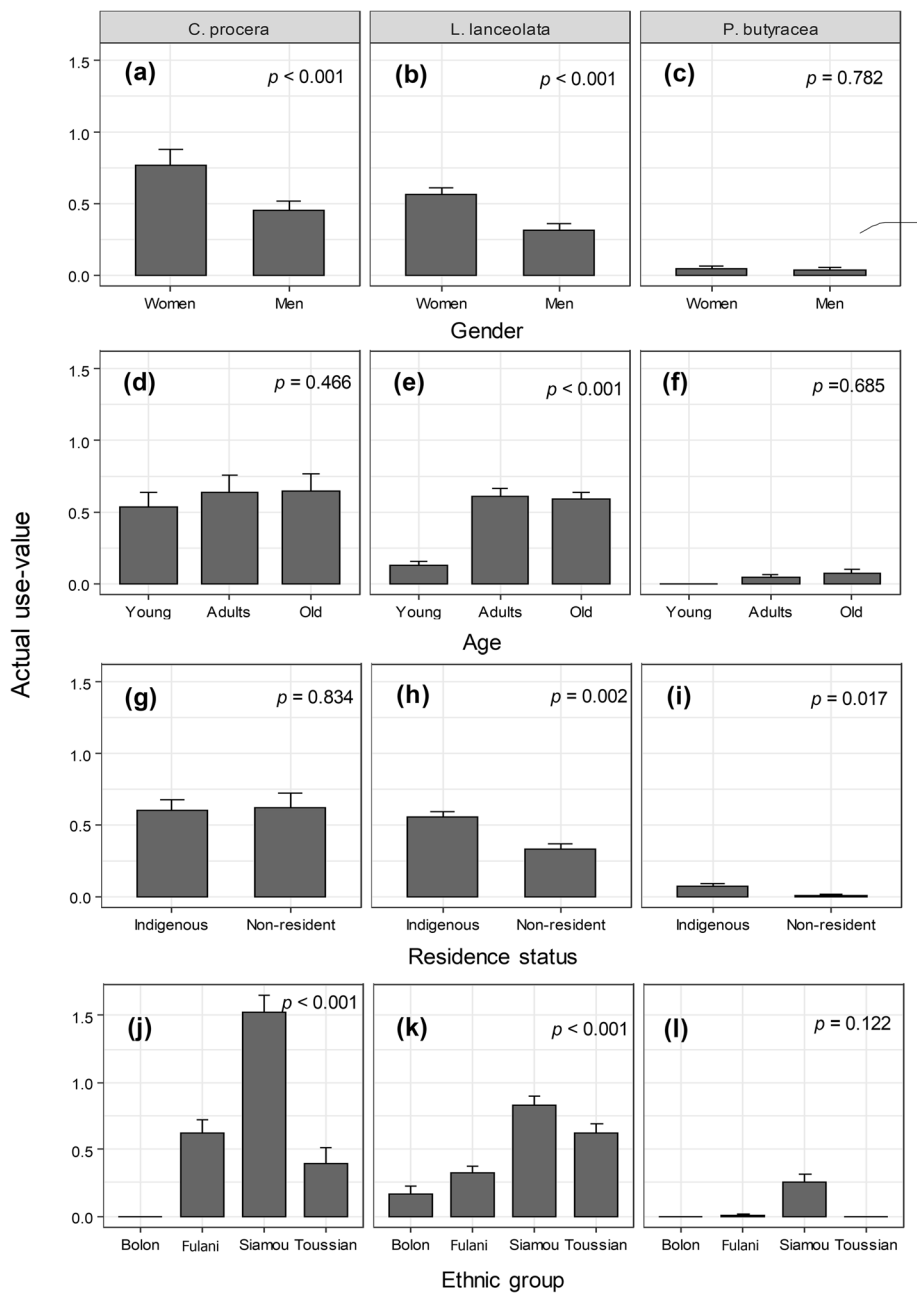


Fig. 4 .

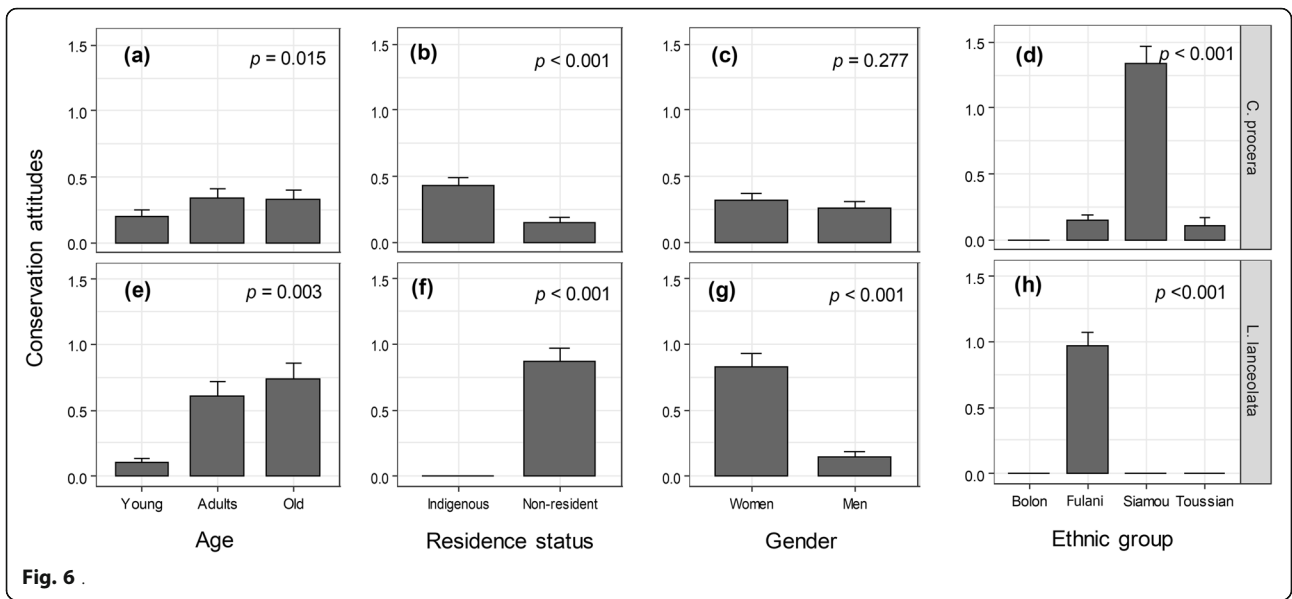


Fig. 6 .